

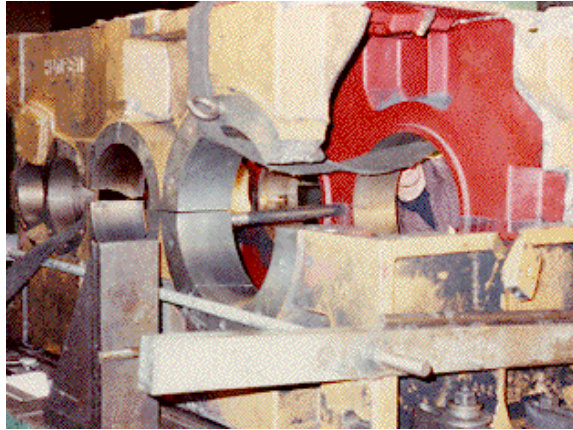
METAL STITCHING

Metal Surgery Solves Puzzle of the Broken Gear Box

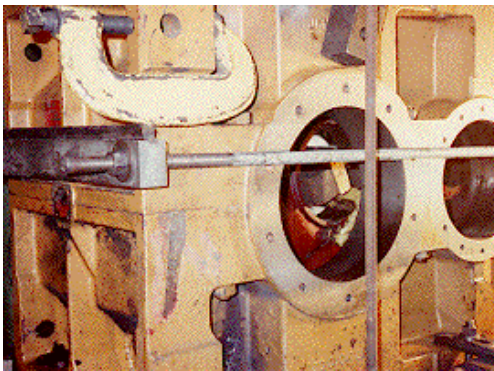
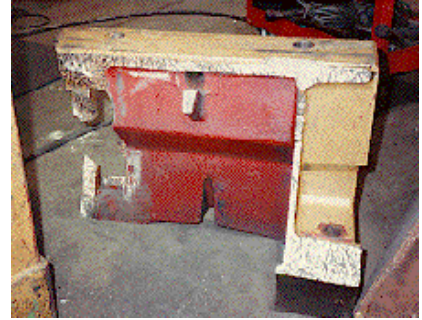
Operation on this conveyor system was humming along when suddenly the chain climbed the sprocket on this Hanson gear box. The shaft tore loose and proceeded to self-destruct. Plant operation was brought to a dead stop at a cost of \$300,000 per day..

Stitching - joins broken cast iron and dissimilar metal to like-new condition, on-site or in-house. *Stitching restores casting strength to equal or better than original shock load capacity. The repair distributes torsional load away from fatigue points and maintains surface alignments.*

THE PROBLEM



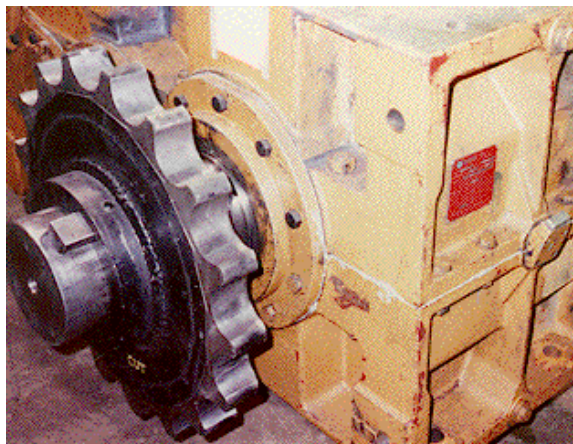
Hanson gear box is in nine pieces upon arrival to shop.



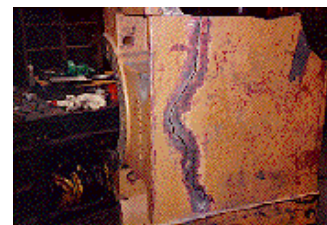
THE FIX

Precise alignment and clamping in a variety of places re-established critical dimensions.

THE RESULTS



For the completed repair, no machining was necessary. Procedure saved owner considerable downtime as a new gear box would not be available for nine months



METAL SURGERY, MILW. Ltd.

182 W. Oklahoma Ave. Building #23
Milwaukee, WI 53207
(414) 744-8313 Fax: (414) 744-8770

The ***Get-It-Done*** Professionals in World-Wide Repair

THE RESULTS

*For the completed repair; no machining was necessary.
Procedure saved owner considerable downtime as a new gear box would not be available for nine months.*

View show the extent of the repair on the housing.

